

Modified Register for Obadiah SEELY

First Generation

1. **Obadiah SEELY** was born before 5 Jun 1614 in Birmingham, Warwickshire, England, UK. He was christened on 5 Jun 1614 in St Stephens Parish: Birmingham, Warwickshire, England, UK. He died on 25 Aug 1657 in Stamford, Fairfield, CT, USA. He was buried in Stamford, Fairfield, CT, USA.

Notable individual because He was an immigrant from England, one of the original founders of Stamford, CT (established in 1640).

See book "The Seelys of New Brunswick", page 340.

However, the following information puts doubt in the accuracy of the Seelys book on Obadiah's parentage, birth, and his wife's birth name.

For years genealogists thought that both Obadiah and Nathaniel were sons of Robert Seeley and Mary Mason. However, there were always many questions about this assumption. There is documentary proof that Nathaniel Seeley was the son of Robert Seeley and Mary Mason. A christening record for Nathaniel Seeley is in the St. Stephens parish record for 16 Sep 1627. No documentary evidence can be found showing Obadiah is their son. The 1 May 1629 record was for a Nathaniel Hoskins son of Robert and Mary Hoskins. The Seeley Genealogical Society did DNA testing of direct line male descendants of both Obadiah and Nathaniel. The DNA testing showed that Obadiah and Nathaniel are not brothers and are in fact at least 50 generations apart from any common ancestor.

Obadiah is believed to be a son of William Seeley of Birmingham, England. If he is the son, he was christened 5 Jun 1614, St. Martin's parish, Birmingham, Warwickshire, England. He married in Stamford, Connecticut, Mary, widow of John Miller who died 1642, Stamford, Connecticut. SGS research can find no proof this Mary was Mary Angel. It is good to know someone else is working on a Seeley line. I hope the above information may help you in your continued research. -- Clair L. Hendrickson

On 30 Aug 2008 This database was updated for corrected parentage and dates for this Obadiah.

Obidiah is SGS (<http://www.seeley-society.net>) Id# 4.

Obadiah married **Mary ANGELL**, daughter of James ANGEL and Elliot ANNA, in 1644/1645 in Stamford, Fairfield, CT, USA. Mary was born about 1616 in , , England, UK. She died in 1665 in Stamford, Fairfield, CT, USA.

Mary was the widow of John Miller who died 1642 in Stamford CT and had three sons by John.

Mary's birth surname is unproven. Surname spelling is Angel or Angell.

Alternate birth info for Mary is 1623 Wethersfield, Hartford, CT.

Alternate death info for Mary is 7 Nov 1666 Stamford, Fairfield, CT

A chart prepared by Leslie Seely of Easttown, NJ: Mary Huster Miller sister of Robert Huster and widow of John Miller married Obadiah Seely, about 1648.

When married - She was 32, He was 31

Obadiah and Mary had the following children.

- + 2 M i. **Obadiah SEELY** was born about 1645. He died on 25 Jul 1680.
- 3 M ii. **Cornelius SEELY** was born in 1650 in Stamford, Fairfield, CT, USA. He died after 1714 in Bedford, Westchester, NY, USA.

Obidiah is SGS (<http://www.seeley-society.net>) Id#18

Cornelius married **Priscilla OSBORN**, daughter of Richard OSBORN and Mary, about 1672 in , Fairfield Co., CT, USA. Priscilla was born on 3 Mar 1650 in New Haven, New Haven, CT, USA. She died after 1710 in Bedford, Westchester, NY, USA.

- 4 M iii. **Jonas SEELY** was born on 22 Jul 1652 in Stamford, Fairfield, CT, USA. He died on 27 Mar 1703 in Stamford, Fairfield, CT, USA.

Two children by first wife, six by 2nd wife (Mary)

Will dated 20 Mar 1702/3 was not allowed. Estate inventory 5 mar 1704/5.

Obidiah is SGS (<http://www.seeley-society.net>) Id#19

Jonas married **Mary WICKS/WICKES/WEEKS**, daughter of Thomas WICKS/WICKES/WEEKS and Elizabeth, about 1689 in Stamford, Fairfield, CT, USA. Mary was born about 1660. She died on 31 Dec 1738 in Stamford, Fairfield, CT, USA.

Jonas also married **Mary SLAWSON** in 1683. Mary died about 1689.

- 5 M iv. **Habakuk SEELY** was born about 1655 in Stamford, Fairfield, CT, USA. He died on 13 Jun 1658 in Stamford, Fairfield, CT, USA.

Died at age 3.

Obidiah is SGS (<http://www.seeley-society.net>) Id#20

Second Generation

2. **Obadiah SEELY** (Obadiah) was born about 1645 in Stamford, Fairfield, CT, USA. He died on 25 Jul 1680 in Fairfield, Fairfield, CT, USA.

Obadiah was granted a home lot in Stamford for service against the Indians.

Obidiah is SGS (<http://www.seeley-society.net>) Id#17

Obadiah married **Esther STEVENS**, daughter of Thomas STEVENS and Ann, about 1671 in Stratford, Fairfield, CT, USA. Esther was born about 1648 in Stamford, Fairfield, CT, USA. She died before 7 Mar 1711 in Fairfield, Fairfield, CT, USA.

Esther married 2nd Moses JACKSON, son of Henry JACKSON. Moses had married first 1672 Deborah HYATT.

They had the following children.

- + 6 M i. **Obadiah SEELY** was born in 1670. He died on 4 Sep 1745.
- 7 M ii. **Benjamin SEELY** was born in 1671 in Stamford, Fairfield, CT, USA. He died on 5 Sep 1696 in Stamford, Fairfield, CT, USA.
- + 8 F iii. **Abigail SEELY** was born in 1673. She died on 18 Dec 1752.
- 9 M iv. **Nathaniel SEELY** was born in 1675 in Stratfield, Fairfield, CT, USA. He was christened on 22 Nov 1696 in Fairfield, Fairfield, CT, USA.
- 10 M v. **Jonas SEELY** was born in 1679 in Stamford, Fairfield, CT, USA. He died about 1763.

Third Generation

6. **Obadiah SEELY** (Obadiah, Obadiah) was born in 1670 in Stamford, Fairfield, CT, USA. He died on 4 Sep 1745 in Stamford, Fairfield, CT, USA.

See page 342, the Seelys of New Brunswick.

Obadiah SEELY (3rd) spent most of his life in Stamford, CT. He was one of the original founders of Bedford, NY, but returned to Stamford, selling his Bedford property to Thomas Chambers by 1710.

Obadiah married **Susanna FINCH**, daughter of Samuel FINCH and Sarah HOYT, on 5 Dec 1692 in Stamford, Fairfield, CT, USA. Susanna was born on 3 Mar 1674 in Stamford, Fairfield, CT, USA. She died on 4 Sep 1745 in Stamford, Fairfield, CT, USA.

They had the following children.

- + 11 M i. **John S. SEELY** was born on 25 Aug 1693. He died on 19 Mar 1756.
- 12 M ii. **Nathaniel SEELY** was born on 19 Jun 1695 in Stamford, Fairfield, CT, USA.
Nathaniel married **Elizabeth HOLLY** on 29 Jun 1722.
- 13 F iii. **Mercy SEELY** was born on 7 Aug 1701 in Stamford, Fairfield, CT, USA. She died on 15 Sep 1715.
- + 14 M iv. **Obadiah SEELY** was born on 7 Aug 1701. He died on 13 Apr 1783.
- 15 F v. **Susanna SEELY** was born on 5 Aug 1705 in Stamford, Fairfield, CT, USA.
Susanna married **Ebenezer PETIT** in 1726 in Stamford, Fairfield, CT, USA.
Ebenezer was born in 1700 in Stamford, Fairfield, CT, USA. He died on 3 Feb 1731 in Stamford, Fairfield, CT, USA.
- 16 M vi. **Elijah SEELY** was born on 3 Sep 1707 in Stamford, Fairfield, CT, USA. He died about 1785.
Elijah married **Eunice SCHOFIELD**, daughter of Samuel SCHOFIELD and Eunice BUXTON, on 26 Jun 1728 in Stamford, Fairfield, CT, USA. Eunice was born on 9 Sep 1707/1709 in Stamford, Fairfield, CT, USA. She died about 1755 in Stamford, Fairfield, CT, USA.
- 17 vii. **Perserved SEELY** was born on 11 Jun 1711 in Stamford, Fairfield, CT, USA.

8. **Abigail SEELY** (Obadiah, Obadiah) was born in 1673 in Stamford, Fairfield, CT, USA. She died on 18 Dec 1752 in Stamford, Fairfield, CT, USA.

Abigail married **Joseph FINCH** on 7 Aug 1703 in Stamford, Fairfield, CT, USA.

They had the following children.

- 18 M i. **Joseph FINCH** was born on 6 Aug 1704 in , Fairfield, CT, USA.

Fourth Generation

11. **John S. SEELY** (Obadiah, Obadiah, Obadiah) was born on 25 Aug 1693 in Stamford, Fairfield, CT, USA. He died on 19 Mar 1756 in Stamford, Fairfield, CT, USA.

John married **Abigail BISHOP** on 2 Jun 1720 in Stamford, Fairfield, CT, USA. Abigail was born on 15 Jul 1696 in Stamford, Fairfield, CT, USA. She died on 5 Sep 1757 in Stamford, Fairfield, CT, USA.

They had the following children.

- 19 M i. **John SEELY**.

John married **Ann SEELY**, daughter of Obadiah SEELY and Sarah HOLLY, on 24 Mar 1754. Ann was born on 24 Aug 1734 in Stamford, Fairfield, CT, USA. She died on 8 Aug 1808 in Stamford, Fairfield, CT, USA.

14. **Obadiah SEELY** (Obadiah, Obadiah, Obadiah) was born on 7 Aug 1701 in Stamford, Fairfield, CT, USA. He died on 13 Apr 1783 in Stamford, Fairfield, CT, USA.

See pg 343 in the Seelys of New Brunswick.

Obadiah married **Sarah HOLLY**, daughter of John HOLLY and Hannah NEWMAN, on 22 Jun 1727 in Stamford, Fairfield, CT, USA. Sarah was born on 30 Sep 1701 in Stamford, Fairfield, CT, USA. She died on 29 May 1765 in Stamford, Fairfield, CT, USA.

They had the following children.

- 20 M i. **Obadiah SEELY** was born on 8 May 1728 in Stamford, Fairfield, CT, USA. He died before Nov 1775 in Stamford, Fairfield, CT, USA.

Obadiah married **Abigail CRISSY** on 10 May 1750 in Stamford, Fairfield, CT, USA.

- 21 F ii. **Sarah SEELY** was born on 28 Sep 1729 in Stamford, Fairfield, CT, USA. She died on 11 Apr 1791 in New Canaan, Fairfield, CT, USA.

Sarah married **Samuel fifth HOYT** on 8 Sep 1748.

- 22 F iii. **Esther SEELY** was born on 10 Jun 1731 in Stamford, Fairfield, CT, USA. She died after Oct 1754.

Esther married **Josiah HULL** on 11 Nov 1751.

- 23 M iv. **Josiah SEELY** was born on 21 Jan 1732 in Stamford, Fairfield, CT, USA. He died on 25 Jan 1820 in Delhi, , NY, USA.

Josiah married **Mary TOOKER** on 18 Mar 1755.

- 24 F v. **Ann SEELY** was born on 24 Aug 1734 in Stamford, Fairfield, CT, USA. She died on 8 Aug 1808 in Stamford, Fairfield, CT, USA.

Ann married **John SEELY**, son of John S. SEELY and Abigail BISHOP, on 24 Mar 1754.

- 25 F vi. **Lydia SEELY** was born on 19 May 1736 in Stamford, Fairfield, CT, USA. She died after 1801 in New Canaan, Fairfield, CT, USA.

Lydia married **Lemuel RAYMOND** on 13 Dec 1759. Lemuel was born about 1734 in New Canaan, Fairfield, CT, USA. He died before 1768.

- + 26 M vii. **Seth SEELY** was born on 30 Dec 1737. He died on 6 May 1823.

- 27 M viii. **Ezekeil SEELY** was born on 11 Apr 1740 in Stamford, Fairfield, CT, USA. He died in 1794 in Central Blissville, Sunbury, NB, Canada.

Ezekeil served in the military in French & Indian War. He served in the military in American Rev. War.

5th Company from Connecticut in the French & Indian War.

In the American Revolution he was a Loyalist. He served in the King's American Rangers. He went to Saint John, New Brunswick, Canada in 1783.

Ezekeil married **Catherine WALSH**.

28 M ix. **John SEELY** was born on 24 Aug 1742 in Stamford, Fairfield, CT, USA. He died on 23 Nov 1746 in Stamford, Fairfield, CT, USA.

29 F x. **Mercy SEELY** was born on 24 Aug 1744 in Stamford, Fairfield, CT, USA. She died on 15 Apr 1805.

Mercy married **Elliot GREEN** on 22 Apr 1766.

Fifth Generation

26. **Seth SEELY** (Obadiah, Obadiah, Obadiah, Obadiah) was born on 30 Dec 1737 in Stamford, Fairfield, CT, USA. He died on 6 May 1823 in Long Reach, Kings, NB, Canada.



Seth was a farmer in Stamford, Connecticut with a house and eleven acres of land. On 2 May 1776 he was brought before the Committee of Public Safety in Stamford and charged with signing a Loyalist Statement which he had circulated and obtained eighteen signatures. He refused to sign a similar statement for the Committee. He was carried through the streets on a rail, then put in the stocks and smeared with eggs and robbed of any money, "for the entertainment of the company".

During the American Revolutionary War, Seth joined the British, under the command of General Howe in Long Island, NY on 3 September 1776. He worked for the British as a wagoner and woodcutter. He returned to Stamford in 1777 where he was imprisoned in the Fairfield jail for six months. After his imprisonment his properties were confiscated and he returned to Long Island, this time with his family.

Due his allegiance with the British during the American Revolution Seth Seely was sentenced to one year imprisonment and to forfeit all of his properties, real and personal to the government of the state of Connecticut, United States of America. Dated Fourth Tuesday of November AD 1777. He sailed for Saint John on Sunday 27 April 1783 as a Loyalist refugee.

Seth Seely arrived at Saint John in the Spring Fleet on the ship "Union" on 12 May 1783. He arrived with a wife, four children ten years of age or older and three children under the age of ten. (His Daughter Tamar later joined the family in Saint John and his son Seth arrived as an adult years later) He was granted lot 389 in Parrtown (Saint John) which he sold to John Ward on 24 Nov 1794. Seth is buried in his homestead graveyard, Lot #15 a 200 acre land grant dated 14 July 1784, Long Reach, Kings County, New Brunswick.

He submitted a land petition, dated 22 Aug 1812 which states that he was originally granted 200 acres, and that he and his son Linus were applying for 300 acres each in the Parish of Norton on the north side of the Kennebecasis River. He received this grant, Lot 2, Redding Brook, on 19 October 1816.

Refer to the book "The Seelys of New Brunswick" starting on page 345.

Seth married **Sarah SCHOFIELD**, daughter of Josiah SCHOFIELD and Sarah YOUNGS, on 21 Nov 1756 in Stamford, Fairfield, CT, USA. Sarah was born on 11 Nov 1737 in Stamford, Fairfield, CT, USA. She died on 2 Feb 1820 in Long Reach, Kings, NB, Canada.

They had the following children.

- 30 F i. **Sarah SEELY** was born on 19 Nov 1757 in Stamford, Fairfield, CT, USA. She died on 19 Nov 1757 in Stamford, Fairfield, CT, USA.

- 31 F ii. **Tamar SEELY** was born on 19 Nov 1757 in Stamford, Fairfield, CT, USA.
twin of Sarah

Tamar married **Abraham Joseph HARRINGTON**.

Tamar also married **John BRITTANY**.

- 32 F iii. **Ruth SEELY** was born on 14 Feb 1763 in Stamford, Fairfield, CT, USA.

- 33 F iv. **Annah SEELY** was born on 3 Mar 1765 in Stamford, Fairfield, CT, USA. She died in 1820.

Annah married **Alexander FAIRCHILD** in 1786 in Saint John, Saint John, NB,

Canada.

Annah also married **James GAYNOR**.

- 34 M v. **Seth SEELY Capt** was born on 29 Nov 1767 in Stamford, Fairfield, CT, USA. He died on 23 May 1852 in Saint John, Saint John, NB, Canada.

Seth arrived on the ship "Union" along with his father in May 1783. He and his widowed sister, Tamar, were granted Lot No. 11, St. John River, Wickham Parish, Queens County (100 acres) on 6 July 1784. He apparently stayed in Saint John and became a ships captain. In 1812 he was captain of the privateer "Nancy" and also commanded many other ships.

Seth and Anna had 11 children

Seth married **Anna SQUIRES** on 11 Oct 1791 in Stamford, Fairfield, CT, USA. Anna was born on 14 May 1773 in , , CT, USA. She died on 3 Jan 1857 in , , NB, CA.

- 35 M vi. **Beach SEELY** was born on 3 Apr 1770 in Stamford, Fairfield, CT, USA. He died in 1797 in New York City, New York, NY, USA.

died of yellow fever on a voyage with his brother Seth who was captain of the vessel "Good Intent" at the time.

- 36 M vii. **Jerome SEELY** was born on 7 Jun 1772 in Stamford, Fairfield, CT, USA.

Jerome married **Anne MOORE**.

- + 37 M viii. **Linus SEELY** was born on 30 Apr 1774. He died on 12 Nov 1852.

- 38 F ix. **Sarah Armitage SEELY** was born on 12 Feb 1777 in Stamford, Fairfield, CT, USA.

Sarah married **William THANE**.

Sarah also married **Abraham "Tuffy" EVANS**.

- 39 M x. **William SEELY** was born on 9 Jun 1779 in Stamford, Fairfield, CT, USA.

William married **Elizabeth BRAYDON**.

Sixth Generation

37. **Linus SEELY** (Seth, Obadiah, Obadiah, Obadiah, Obadiah) was born on 30 Apr 1774 in Stamford, Fairfield, CT, USA. He died on 12 Nov 1852 in Guilford, St. John, NB, Canada.

Came to New Brunswick with his Loyalist father in 1783.

Linus petitioned with his father 22 August 1812 requesting grants of 300 acres each.

Linus was granted Lot #1, Reddin Brook on 19 October 1816 located on the north shore of the Kennebecasia River in Norton Parish. He was not listed in the census for Kings County and the 1851 census for most of Saint John is missing. He presumably had moved to Saint John by this time.

Linus married **Mary KELLY**, daughter of John KELLY and Cynthia BROWN, in 1798 in Saint John, Saint John, NB, Canada. Mary was born on 12 Feb 1778 in Saint John, Saint John, NB, Canada. She died in 1798 in Saint John, Saint John, NB, Canada.

Alternate birth location: Poughkeepsie, NY; per Seeley Book

They had the following children.

- + 40 F i. **Maria G. SEELY** was born about 1797. She died on 22 May 1868.
- + 41 M ii. **Linus SEELY** was born in 1798. He died on 8 Jul 1880.

Linus also married **Hannah DUNHAM**. Hannah was born in 1781 in of: Long Reach, Saint John, NB, Canada. She died on 22 Oct 1859. She was buried in St. Alban's Cemetery: Cocagne, Kent, NB, Canada.

BURIAL: St Alban's Cemetery

They had the following children.

- 42 M iii. **Richard SEELY**.
- 43 M iv. **Joseph SEELY** was born in 1802 in , , NB, Canada. He died in 1858 in Saint Stephen, , NB, Canada.
- 44 F v. **Elizabeth SEELY** was born in 1804 in , , NB, Canada.
Elizabeth married **John Sangster SEELY**.
Elizabeth also married **Daniel RUSSELL** on 28 Nov 1830 in Carleton, St. John, NB, Canada. Daniel was born about 1799 in Carleton, St. John, NB, Canada.
- 45 F vi. **Charlotte SEELY** was born in 1806 in Carleton, St. John, NB, Canada.
Charlotte married **Elijah SPRAGUE**. Elijah was born about 1801 in Carleton, St. John, NB, Canada.
- + 46 M vii. **Beach Peters SEELY** was born in 1807. He died on 24 Dec 1849.
- 47 F viii. **Sarah SEELY** was born in 1808 in , , NB, Canada.
- 48 F ix. **Ann Francis "Fanny" SEELY** was born in 1810 in , , NB, Canada.
Fanny married **Daniel BARNES** on 27 Aug 1839 in , Carleton, NB, Canada.
- + 49 M x. **Charles H SEELY** was born on 9 Apr 1812. He died on 20 Dec 1894.
- 50 M xi. **William Holem SEELY** was born in 1813 in Carleton, St. John, NB, Canada. He died in 1847.
William married **Amelia IRVIN** in 1833 in Saint George, Carleton, NB, Canada.
- 51 M xii. **Seth SEELY** was born in 1814.
- 52 M xiii. **Hiram SEELY** was born in 1823 in , , NB, Canada. He died in 1843 in Carleton, St.

John, NB, Canada.

Seventh Generation

40. **Maria G. SEELY** (Linus, Seth, Obadiah, Obadiah, Obadiah, Obadiah) was born about 1797 in St. John, St. John, NB, Canada. She died on 22 May 1868. She was buried in Church of the Ascension Cemetery: Saint John, Saint John, NB, Canada.

BURIAL: Not sure if this is the cemetery by that name in Saint John, NB

Maria married **Hanford BOSTWICK**, son of Isaac BOSTWICK and Tamson CABLE, on 7 Nov 1822 in Long Reach, Kings, NB, Canada. Hanford was born on 21 Sep 1785. He died on 13 Aug 1866. He was buried in Church of the Ascension Cemetery: Saint John, Saint John, NB, Canada.

BURIAL: Not sure if this is the cemetery by that name in Saint John, NB

They had the following children.

- 53 F i. **Harriet Maria BOSTWICK** was born on 30 Apr 1834 in Norton, , NB, Canada.

Harriet married **Samuel E. HOYT**.

41. **Linus SEELY** (Linus, Seth, Obadiah, Obadiah, Obadiah, Obadiah) was born in 1798 in , , NB, Canada. He died on 8 Jul 1880 in Greenwich, Kings, NB, Canada. He was buried in Oak Point Cemetery: Greenwich, Kings, NB, Canada.



Linus was counted in a census in 1851 in Kingston, Kings, NB, Canada.

Linus married **Jane STERRITT**, daughter of William STERRITT, on 6 Nov 1825 in , , NB, Canada. Jane was born in 1810 in Long Reach, Kings, NB, Canada. She died in 1844 in , , NB, Canada.

They had the following children.

- 54 M i. **William Linus SEELY** was born about 1828 in Long Reach, Kings, NB, Canada. He died on 1 Dec 1861 in Long Reach, Kings, NB, Canada.

William married **Margaret A. SAUNDERS**.

- + 55 F ii. **Mary Jane SEELY** was born about 1830. She died on 9 May 1870.

- + 56 F iii. **Anna Adelaide SEELY** was born on 10 May 1834. She died on 28 May 1911 from Valvular Heart Disease.

- 57 M iv. **Seth Sterritt SEELY** was christened on 13 Jul 1834 in Kingston, Kings, NB, Canada.

CHRISTENING: Trinity Church

Seth might not be a son of this Linus and Jane, might have the wrong parents.

- + 58 M v. **James Alfred SEELY** was born on 8 Feb 1837. He died in 1929.

- 59 M vi. **George Thomas SEELY** was born on 1 May 1839 in , , NB, Canada. He died in 1921 in , , NB, Canada. He was buried in 1921 in Oakpoint Cemetery: Kings County, NB, Canada.



George was counted in a census in 1851 in Kingston, Kings, NB, Canada.

George married **Anna Katherine SPENCE** on 28 Feb 1867. Anna was born about 1845 in Long Reach, Kings, NB, Canada. She died in 1914 in , Kings, NB, Canada. She was buried in 1914 in Oakpoint Cemetery: Greenwich, Kings, NB, Canada.

- 60 F vii. **Amanda Margaret SEELY** was born about 1842 in Long Reach, Kings, NB, Canada.

Amanda was counted in a census in 1851 in Kingston, Kings, NB, Canada.

Amanda married **Hubert A. PITT**.

46. **Beach Peters SEELY** (Linus, Seth, Obadiah, Obadiah, Obadiah, Obadiah) was born in 1807 in Long Reach, Kings, NB, Canada. He was baptized on 15 Dec 1831 in Carleton, St. John, NB, Canada. He died on 24 Dec 1849 in Carleton, St. John, NB, Canada.

Beach married **Mary Elizabeth LAMOUREAUX** on 25 Dec 1831 in Carleton, St. John, NB, Canada.

MARRIAGE: St Georges Chapel, Carleton, St. John, New Brunswick, Canada.

Beach and Mary had the following children.

- 61 M i. **Linus Henry SEELY** was born on 15 Apr 1832 in St. John, St. John, NB, Canada. He was baptized in Oct 1832 in Carleton, St. John, NB, Canada. He died on 15 Jan 1918 in Grand Manan, Charlotte, NB, Canada. He was buried in Cedar Hill Cemetery: Saint John, Saint John, NB, Canada.

Not convinced this Linus Seely was the husband of Sarah Edmundson. no proof he ever left New Brunswick, how did he marry Sarah in Ohio and she ended up in Texas. However, in an article (<http://www.helium.com/items/492733-biography-sarah-emma-edmundson?page=2>) the following is found: "... Sarah took the profits from her very popular book and moved back to Canada, where she met, fell in love with and married Linus Seelye. They moved back to the United States and raised three sons. "

BURIAL: Cedar Hill Cemetery, assume this is the one in (west) Saint John, New Brunswick, Canada by that name

Linus married **Hannah JONES**, daughter of David JONES, on 21 Oct 1861 in Woodstock Parrish, Carleton, NB, Canada. Hannah was born in Woodstock Parrish, Carleton, NB, Canada. She died on 13 Feb 1866.

Linus also married **Sarah Emma Evelyn EDMUNDSON**, daughter of Issac EDMUNDSON and Elizabeth LEEPER "Betsy", on 25 Apr 1867 in Weddell House: Cleveland, Cuyahoga, OH, USA. Sarah was born in Dec 1841 in Magaguadavic, York, NB, Canada. She died on 5 Sep 1898 in LaPorte, Harris, TX, USA.



Sarah served in the military in US Civil War. Notable individual because She was a spy during the American Civil War and published stories of her adventures.

Books about Emma Edmundson alias Frank Thompson:
"Memoirs of a Soldier, Nurse and Spy"
"Behind Rebel Lines"
"Nurse and Spy in the Union Army"
"Secrets of a Civil War Hero - the story of Sarah Emma Edmonds"

She is also known as Sarah Edmonds which is the pen name she used for the book she wrote about her Civil War adventures.

The following biography is from the Texas State Historical Association article at:

<http://www.tshaonline.org/handbook/online/articles/SS/fse16.html>

SEELYE, SARAH EMMA EVELYN EDMUNDSON (1841-1898). Sarah Seelye was born Sarah Emma Evelyn Edmundson in New Brunswick province, Canada, in December 1841. To avoid an unwanted marriage, she ran away from home when she was seventeen, disguised as a boy. She continued her male masquerade as a

publisher's agent in the Midwestern United States and, on May 25, 1861, enlisted in Company F, Second Michigan Volunteer Infantry Regiment, under the alias Franklin Thompson. For nearly two years she served in the Union Army undetected, with assignments including male nurse, regimental mail orderly, and brigade postmaster, and on special assignments for the secret service. Ironically, in the secret service duty she penetrated Confederate lines "disguised" as a woman. Fearing her guise would be discovered when she became ill with malaria in 1863, she deserted and resumed a normal existence in Ohio as a female. After regaining her health she again volunteered as a nurse, but this time with the Christian Sanitary Commission at Harper's Ferry, and as a female. Under a shortened version of her maiden name, S. Emma E. Edmonds, she wrote a fanciful, but highly successful, account of her experiences in the army, *Nurse and Spy in the Union Army* (1865). The popularity and exposure she gained from the book and its revelation that she had deserted the army at one time led the government to cancel her pension. She later married a childhood neighbor, Linus Seelye, and reportedly had five children, three of whom died in infancy. A congressional bill in 1884 recognized her service to the Union and granted her a pension of twelve dollars a month. The charge of desertion from the army was removed by Congress in 1886. In the early 1890s the Seelye family moved to La Porte, Texas, and on April 22, 1897, Sarah Seelye became a member of the McClellan Post, Grand Army of the Republic (GAR), in Houston, Texas. The only woman member in the history of the GAR, though as many as four hundred women may actually have served in the Union army. At the time of her death Seelye was writing her memoirs of the Civil War. She died in La Porte, Texas, on September 5, 1898. Three years later, at the insistence of her fellow members of the McClellan Post, her remains were transferred to the GAR plot in the Washington (German) Cemetery in Houston.

BIBLIOGRAPHY: Sylvia G. L. Dannett, *She Rode with the Generals: The True and Incredible Story of Sarah Emma Seelye, Alias Franklin Thompson* (New York: Nelson, 1960). Betty Fladeland, "Alias Franklin Thompson," *Michigan History* 42 (December 1958). Betty Fladeland, "New Light on Sarah Emma Edmonds, Alias Franklin Thompson," *Michigan History* 47 (December 1963). Mary Hoehling, *Girl Soldier and Spy: Sarah Emma Edmundson* (New York: Messnor, 1959). *Houston Post*, September 7, 1898, June 2, 1901, February 26, 1967.

Another short biography is at the Seeley Genealogical Society (SGS) Web site: <http://www.seeley-society.net/bios-ye/bio-eseelye.html> which provides additional links.

- 62 M ii. **Charles SEELY** was born after 1832.
- 63 F iii. **Mary SEELY** was born after 1832.
- 64 M iv. **James Porteous SEELY** was born after 1832.
- 65 M v. **Manley Danforth SEELY** was born after 1832.
- 66 F vi. **Elizabeth SEELY** was born after 1832.
- 67 F vii. **Margaret SEELY** was born after 1832.

- 49. **Charles H SEELY** (Linus, Seth, Obadiah, Obadiah, Obadiah, Obadiah) was born on 9 Apr 1812 in Saint John, Saint John, NB, Canada. He died on 20 Dec 1894 in Wards Corner, Kent, NB, Canada.

Charles married **Jane IRVING**, daughter of James IRVING, in 1834 in Richibucto, Kent, NB, Canada. Jane was born about 1817 in , , Scotland, UK. She died after 1859 in , , Canada.

There is a Jane Irving b. 25 Aug 1814 in Scotland that married a Thomas McCallum of Nova Scotia, Canada. My belief is that is a different Jane Irving from the one who married Charles Seely.

They had the following children.

- 68 M i. **William W SEELY** was born on 7 Jan 1835. He died on 18 Mar 1836.
- 69 M ii. **James Irving A. SEELY** was born on 18 May 1838 in Buctouche, Kent, NB, Canada. He was baptized about 1838 in Anglican Church: Richibucto, Kent, NB, Canada. He died on 3 May 1928 in Rockland, Knox, ME, USA.

Seely book contadicts itself on birth place Buctouche or Richibucto Kent county New Brunswick, Canada.

See Seely book pages 393 - 394. Includes a poem to Ruth from James

James married **Ruth Strange SMITH** on 7 Jun 1860 in Richibucto, Kent, NB, Canada. Ruth was born on 25 Jun 1842. She was baptized on 18 Jul 1843 in St Martins In The Woods, Shediac.

James also married **Lucy GARDNER** on 14 Jan 1903 in Rockland, Knox, ME, USA. Lucy was born about 1855 in Rockport, Knox, ME, USA.

James Seely was Lucy Gardner's third husband. Clough was likely her second husband's surname.

- 70 M iii. **Linus SEELY** was born on 1 Jan 1840. He died on 27 Jul 1847.
- 71 M iv. **William SEELY** was born on 7 Apr 1842.
- 72 F v. **Hannah Dunham SEELY** was born on 14 Nov 1844 in Richibucto, Kent, NB, Canada. She died on 7 Aug 1877.
- 73 F vi. **Jane SEELY** was born on 30 Nov 1846 in Richibucto, Kent, NB, Canada. She died on 7 Jul 1847.
- 74 M vii. **Linus SEELY** was born on 9 May 1848 in Richibucto, Kent, NB, Canada. He was baptized on 6 Jul 1850 in Cocagne, Kent, NB, Canada. He died on 9 Oct 1923 in Portland, Cumberland, ME, USA.

SEELY, Linus, building contractor and temperance advocate, was born at Richibucto, N.B., Canada, May 9, 1848, son of Charles H. Seely. At the age of twenty he went to Portland, Me., and engaged in lighthouse and fortification construction work for the government in Maine, Massachusetts and New Hampshire. Subsequently he removed to Buffalo, N.Y., and was employed in similar work, chiefly on Lake Erie and Lake Ontario. He resided in Buffalo for twelve years, and then became inspector of buildings for the police department of New York city under Commissioner Theodore Bingham. Returning to Portland he was associated for six years with Frank A. Rumery in general construction work, and then entered the building business on his own account, his work including contracts for important government structures.

Mr. Seely was identified from his youth with the temperance movement, and became a prohibition advocate of national prominence. When a young man he was candidate for mayor of Buffalo and in 1916 for governor of Maine on the Prohibition ticket. He

was a member of the Masonic fraternity and the Knights of Pythias. He was a member of the Congregational church for more than forty years, serving as a deacon and a teacher of a large class of young men in the Woodfords Congregational Church, Portland. Mr. Seely was a man of high standards and firm convictions, and possessed a wide range of information upon economic and industrial subjects. He was married in 1878 to Ellen Barker, of Portland, Me., and they had one daughter, deceased. Mr. Seeley died in Portland, Me., Oct. 9, 1923.

Linus married **Ellen BAKER** in 1878 in Portland, Cumberland, ME, USA. Ellen was born in of: Portland, Cumberland, ME, USA.

- 75 F viii. **Mary Matilda SEELY** was born on 1 Jan 1850 in Buctouche, Kent, NB, Canada.
- + 76 M ix. **Charles Henry SEELY** was born on 19 Nov 1852. He died about 1927.
- 77 F x. **Agnes Jane SEELY** was born on 2 Dec 1853 in Cocagne, Kent, NB, Canada. She was baptized on 24 Dec 1855. She died on 9 Oct 1875.
- + 78 F xi. **Jessie Ford SEELY** was born on 24 May 1856. She died in Feb 1935.
- 79 F xii. **Margeret "Maggie" SEELY** was born on 5 Dec 1859. She died on 10 Mar 1875. She was buried in St Albans Cem: Cocagne, Kent, NB, Canada.

Eighth Generation

55. **Mary Jane SEELY** (Linus, Linus, Seth, Obadiah, Obadiah, Obadiah, Obadiah) was born about 1830 in Long Reach, Kings, NB, Canada. She died on 9 May 1870 in , Saint John, NB, Canada.

Mary married **John Biggins ANDREWS** on 4 Dec 1850 in Kingston, Kings, NB, Canada.

They had the following children.

80 M i. **Robert ANDREWS**.

81 M ii. **John Biggins ANDREWS** was born on 19 Oct 1855 in Indiantown, Saint John, NB, Canada.

Mary also married **James RUSSELL**.

56. **Anna Adelaide SEELY** (Linus, Linus, Seth, Obadiah, Obadiah, Obadiah, Obadiah) was born on 10 May 1834 in Saint John, Saint John, NB, Canada. She died on 28 May 1911 in Somerville, Middlesex, MA, USA from Valvular Heart Disease. She was buried on 31 May 1911 in Woodlawn Cemetery: Everett, Middlesex, MA, USA.



Anna was counted in a census in 1851 in Kingston, Kings, NB, Canada. She was counted in a census in 1881 in Saint John, Saint John, NB, Canada. She was counted in a census in 1891 in Saint John, Saint John, NB, Canada. She was counted in a census in 1900 in Cambridge, Middlesex, MA, USA. She was counted in a census in 1910 in Somerville, Middlesex, MA, USA.

Sometime after the death of her husband, William Irving, Anna and the youngest daughter Mabel, joined her son, Linus Dudley Irving, who had already moved to the Boston, MA area.

Refer to Seely book pg. 369 which lists Anna's birth c1834. Alternate birth year is 1840, which likely if brother Seth was born in 1834.

1881 Canadian census indicates Adelaide (Anna) was a Calvinist Baptist.

Find-A-Grave website entry: <http://www.findagrave.com/cgi-bin/fg.cgi?page=gr&GRid=59665648>

Anna married **William John IRVING** on 1 Aug 1867 in Saint John, Saint John, NB, Canada. William was born about 1808 in , Ireland, UK. He died on 16 May 1894 in Saint John, Saint John, NB, Canada from "olde age". He was buried on 18 May 1894 in Wesleyan Burial Ground: Saint John, Saint John, NB, Canada.



William was counted in a census in 1881 in Saint John, Saint John, NB, Canada. He was counted in a census in 1891 in Saint John, Saint John, NB, Canada.

If born in 1808, William would have been about 60 years old when he married Anna Adelaide Seely in 1867. Anna would have been 27 years old. So she married a man twice her age. William's birth in 1808 is calculated from his age given in the 1881 census. Sixty seems an old age to get married, but if this was his second marriage, as submitted by Graeme Somerville, in the book "A Library of Stone Pages" this is understandable. Anna was the mother of all his known surviving children. If there was an earlier marriage, there is no record of it yet discovered.

William and his children were Wesleyan Methodist per 1881 census.

They had the following children.

- + 82 F i. **Jennie Virginia IRVING** was born on 23 Mar 1868. She died on 21 Jul 1912 from Miscarriage.
- + 83 M ii. **Linus Dudley IRVING** was born on 2 Aug 1873. He died on 29 Aug 1948.

- + 84 F iii. **Mabel Alberta IRVING** was born on 13 Mar 1874. She died on 16 Oct 1947 from Myocardial Failure & Kidney Failure.

58. **James Alfred SEELY** (Linus, Linus, Seth, Obadiah, Obadiah, Obadiah, Obadiah) was born on 8 Feb 1837 in , , NB, Canada. He died in 1929 in , , NB, Canada. He was buried in Trinity Church Graveyard: Kingston, Kings, NB, Canada.



James was counted in a census in 1851 in Kingston, Kings, NB, Canada.

His grave stone states his birth year as 1837. He is buried with his wife (Elizabeth) and son John B.

James married **Eliza A. HENDERSON**. Eliza was born in 1835. She died in 1927 in , , NB, Canada. She was buried in Trinity Ch: Kingston, , NB, Canada.

They had the following children.

- 85 M i. **John B. SEELY** was born in 1877. He died in 1952.

76. **Charles Henry SEELY** (Charles H, Linus, Seth, Obadiah, Obadiah, Obadiah, Obadiah) was born on 19 Nov 1852 in Cocagne, Kent, NB, Canada. He was baptized on 9 Apr 1853. He died about 1927.

Charles was counted in a census in 1880 in Standish, Cumberland, ME, USA.

Seely book (pg 370) gives birth in November and Baptism in April of same year. Baptism changed to following year in our database.

Charles married **Maria <SEELY>** on 23 May 1876. Maria was born about 1854 in , , ME, USA.

They had the following children.

- 86 F i. **Maggie M. SEELY** was born about 1877 in , , ME, USA.

- 87 F ii. **Fannie A. SEELY** was born about 1879 in , , ME, USA.

78. **Jessie Ford SEELY** (Charles H, Linus, Seth, Obadiah, Obadiah, Obadiah, Obadiah) was born on 24 May 1856 in Cocagne, Kent, NB, Canada. She died in Feb 1935 in Taunton, Bristol, MA, USA.

Jessie married **John Nehemiah WARD** about 1888 in , , NB, Canada. John was born in 1846 in Wards Corner, Kent, NB, Canada.

They had the following children.

- 88 F i. **Ruth Lulu WARD** was born on 23 Aug 1888 in Wards Corner, Kent, NB, Canada. She died on 7 Oct 1970 in Taunton, Bristol, MA, USA.

Ruth married **Frank Edward CAMPBELL** on 7 Nov 1906 in McKees Mills, Kent, NB, Canada. Frank was born on 29 Nov 1886 in McKees Mills, Kent, NB, Canada. He died on 6 Jul 1968 in Taunton, Bristol, MA, USA.

10 Campbell children born in Canada, one set of twins.

Ninth Generation

82. **Jennie Virginia IRVING** (Anna Adelaide SEELY, Linus, Linus, Seth, Obadiah, Obadiah, Obadiah, Obadiah) was born on 23 Mar 1868 in , Saint John, NB, Canada. She died on 21 Jul 1912 in Dedham, Norfolk, MA, USA from Miscarriage. She was buried on 23 Jul 1912 in Brookdale Cemetery: Dedham, Norfolk, MA, USA.



Jennie was counted in a census in 1891 in Saint John, Saint John, NB, Canada. She was counted in a census in 1900 in Eastport, Washington, ME, USA. She was counted in a census in 1910 in Dedham, Norfolk, MA, USA.

Jennie married **Walter CAMPBELL**, son of James CAMPBELL and Harriett Jane BUCKNAM, on 4 Oct 1892 in Saint John, Saint John, NB, Canada. Walter was born on 29 Jun 1871 in , Saint John, NB, Canada. He died on 1 Jun 1950 in Dedham, Norfolk, MA, USA. He was buried on 3 Jun 1950 in Brookdale Cemetery: Dedham, Norfolk, MA, USA.



Walter was counted in a census in 1891 in Kingston, Kings, NB, Canada. He was counted in a census in 1900 in Eastport, Washington, ME, USA. He was counted in a census in 1910 in Dedham, Norfolk, MA, USA. He was counted in a census in 1920 in Dedham, Norfolk, MA, USA. He was naturalized into United States (2nd wife, Alice is a U.S. citizen) on 5 May 1924 residence at Bingham Rd: Dedham, Norfolk, MA, USA. He was counted in a census in 1930 in Dedham, Norfolk, MA, USA.

Walter CAMPBELL & Jennie Virginia IRVING

According to vital Records in St. John county of New Brunswick, Canada - Jennie married Walter in Saint John, New Brunswick on 4 Oct 1892. This date is about 20 months before her father, William IRVING, died (May of 1894). Their marriage record indicates that Walter was living in Boston, MA (USA) at the time and that his occupation was Engineer.

The 1900 US Census for Eastport, Washington County, ME shows that Jennie and Walter moved to the USA in 1895. They reported being married for 7 years, which appears correct (married in Oct and census taken in June - 7 full years). This census record includes a son and two daughters living at home, it also indicates that Jennie has given birth to four children however only three still alive. The children living at home include:

- <firstname> E. Campbell, Son, Born May 1895 in Maine
- Harriet M. (Maude?) Campbell, Daughter, Born Oct 1896 in Maine
- Mabel B. Campbell, Daughter, Born Sept 1898 in Maine

If their son was born in Maine in May of 1895, and they entered the USA 1895, their entry date was during the first 5 months of that year. Jennie reported that her Mother was born in Canada and Father in Ireland, which agrees with the information we have on her parents. Walter reported that he was born June 1871 in Canada, is 28 yrs old, and that both of his parents were born in Canada (Eng).

The 1910 US Census for Dedham, Norfolk County, MA shows Walter, Jennie, and 4 children living in Dedham. Address is 25 Bryant St. Walter reported that he is 39 and Jennie is 42 years old and have been married for 18 years. In disagreement with the 1900 census, this census reports that Jennie gave birth to 4 children of which all are alive. Walter reports that he is an Electrician working for the Electric Co. (Boston Edison). Also in disagreement with the earlier census the year of immigration is reported as 1896 for Walter and 1890 for Jennie. The children listed are:

- Maud H Campbell, born in Maine and is 13 years old
- Mabel B Campbell, born in Maine and is 11 years old
- Elmer J (or G) Campbell, born in Maine and is 8 years old
- Bertram Campbell, born in Massachusetts and is 6 years old

First three children born in Maine last child born in Mass. Must have relocated to Mass. between 1902-1904

Jennie and Walter had the following children.

- 89 M i. **Earnest C. CAMPBELL** was born on 31 Oct 1893 in , , NB, Canada. He died before 1900.

The 1900 Census (Eastport, ME) records Jennie as giving birth to 4 children, yet only 3 are alive and this same census does not include Earnest, so we assume he died prior to to the 1900 census.

- 90 M ii. **Horace Edgar CAMPBELL** was born on 30 May 1895 in Eastport, Washington, ME, USA. He died before 16 Apr 1910.

Horace was counted in a census in 1900 in Eastport, Washington, ME, USA.



Horace appears to be the second child of Walter and Jennie who were married in Oct of 1892. The 1900 census lists him as being 5 yrs old and was born in May 1895. He is not listed in the 1910 census and we assume he died prior to that census being taken.

- 91 F iii. **Maude Harriet CAMPBELL** was born on 3 Oct 1896 in Eastport, Washington, ME, USA. She died on 11 Nov 1990 in Needham, Norfolk, MA, USA.

Maude was counted in a census in 1900 in Eastport, Washington, ME, USA. She was counted in a census in 1910 in Dedham, Norfolk, MA, USA. She was counted in a census in 1920 in Boston, Suffolk, MA, USA. She was counted in a census in 1930 in Needham, Norfolk, MA, USA.



The 1900 census lists this individual as Harriet M. Campbell and the 1910 census lists her as Maude H. Later records identify her as Maude, so she might have been christened as Harriet and assumed her middle name as her first.

According to her daughter Jinnee (Virginia Irving Church); Maude was named for Maude's mother's best friend Maude Seely.

Maude married **Arthur Elliot CHURCH**, son of Herbert B. CHURCH and Hellen B., on 1 Oct 1918 in , , MA, USA. Arthur was born on 16 May 1892 in Brookline, Norfolk, MA, USA.

Arthur was counted in a census in 1920 in Boston, Suffolk, MA, USA. He was counted in a census in 1930 in Needham, Norfolk, MA, USA.

Lived with wife Maude on Newell Ave in Needham.

- 92 F iv. **Mabel Beatrice "Bea" CAMPBELL** was born on 20 Sep 1898 in Eastport, Washington, ME, USA. She died on 18 Mar 1932.

Bea was counted in a census in 1900 in Eastport, Washington, ME, USA. She was counted in a census in 1910 in Dedham, Norfolk, MA, USA. She was counted in a census in 1930 in Marlborough, Middlesex, MA, USA.

Died in 1930 or 1932

Bea married **Curtis Ernst MORSE** about 1916. Curtis was born on 30 Nov 1890 in Roslindale, Middlesex, MA, USA. He died in 1955 in Marlborough, Middlesex, MA, USA.

Curtis was counted in a census in 1930 in Marlborough, Middlesex, MA, USA.



USA.

- 93 M v. **Elmer J. CAMPBELL** was born on 13 Aug 1901 in Eastport, Washington, ME, USA. He died on 19 Feb 1942.

Elmer was counted in a census in 1910 in Dedham, Norfolk, MA, USA.
He was counted in a census in 1920 in Dedham, Norfolk, MA, USA.

Middle name might be "Irving"

Elmer married **Ethel M. UNKNOWN**.

- 94 M vi. **Bertram CAMPBELL** was born on 22 Apr 1903 in Dedham, Norfolk, MA, USA. He died on 6 Apr 1940.

Bertram was counted in a census in 1910 in Dedham, Norfolk, MA, USA.
He was counted in a census in 1920 in Dedham, Norfolk, MA, USA.

83. **Linus Dudley IRVING** (Anna Adelaide SEELY, Linus, Linus, Seth, Obadiah, Obadiah, Obadiah, Obadiah) was born on 2 Aug 1873 in , Saint John, NB, Canada. He died on 29 Aug 1948 in Brooklyn, Kings, NY, USA. He was buried in Evergreen Cemetery: Brooklyn, Kings, NY, USA.

Linus was counted in a census in 1891 in Saint John, Saint John, NB, Canada. He was listed on the ship Cumberland from New Brunswick passenger list on 8 Oct 1892 in Boston, Suffolk, MA, USA. He was counted in a census in 1900 in Cambridge, Middlesex, MA, USA. He was counted in a census in 1910 in Cambridge, Middlesex, MA, USA. He moved about 1918 to New York City, New York, NY, USA. He was counted in a census in 1930 in Brooklyn, Kings, NY, USA. He served in the military in Spanish American War.

It appears that Linus Dudley moved to the Boston, MA area to work a few years before the death of his father. Later his mother and younger sister (Mabel) joined him in Massachusetts.

OCCUPATION: Bookbinder, per Death Certificate, and Census Records, although 1930 census indicates he was a shipping clerk for a medical company.

Served during the Spanish American War - per Death Certificate.

DEATH: Cause of death: Neck Fracture, Heat Prostration. Address at time of death: 134 Warren, Brooklyn, NY. He had been a resident of New York for 30 years.

Linus married **Annie Mae HANNAM**, daughter of John Fremont HANNAM and Jennie BOLTON, on 29 Mar 1905 in Cambridge, Middlesex, MA, USA. Annie was born on 1 Feb 1887 in Cambridge, Middlesex, MA, USA. She died on 5 Feb 1967 in Brooklyn, Kings, NY, USA. She was buried in Evergreen Cemetery: Brooklyn, Kings, NY, USA.

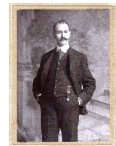
Annie was counted in a census in 1900 in Cambridge, Middlesex, MA, USA. She was counted in a census in 1910 in Cambridge, Middlesex, MA, USA. She was counted in a census in 1920 in Somerville, Middlesex, MA, USA. She was counted in a census in 1930 in Barnstable, Orleans, MA, USA.

Occupation: Typesetter

BIRTH: Birth certificate indicates that Annie was not named at birth. She is recorded as "(Female) Hannam"

Death certificate from Brooklyn, NY indicates she lived in Brooklyn for 15 yrs prior to death. So, she moved to NY about 1952

MARRIAGE: Also shown as Married Boston, Suffolk, MA.



Linus and Annie had the following children.

- 95 F i. **Mildred Seely IRVING** was born on 30 Sep 1905 in Dorchester, Suffolk, MA, USA. She died on 4 Nov 1981 in Fort Jefferson, , NY, USA. She was buried in Evergreen Cemetery: Brooklyn, Kings, NY, USA.



Mildred was counted in a census in 1910 in Cambridge, Middlesex, MA, USA. She was counted in a census in 1920 in Watertown, Middlesex, MA, USA. She was counted in a census in 1930 in Brooklyn, Kings, NY, USA.

BIRTH: Also shown as Born Cambridge, Middlesex, MA.

DEATH: Also shown as Died Port Jefferson, NY.

Mildred married **Frederick Joseph WENZ**, son of Edward Gustav Adolph WENZ and Grace Eugenie VAUTRINOT, on 24 Dec 1930 in Boston, Suffolk, MA, USA. Frederick was born on 5 Nov 1911 in Dedham, Norfolk, MA, USA. He died on 14 Jun 1992 in Port Jefferson, Suffolk, NY, USA. He was buried in Evergreen Cemetery: Brooklyn, Kings, NY, USA.



Frederick was counted in a census in 1930 in Hanson, Plymouth, MA, USA.

BIRTH: Also shown as Born 5 Mar 1911

DEATH: Also shown as Died Brooklyn, Kings, NY.

- 96 F ii. **Ruth Evelyn IRVING** was born on 21 Oct 1906 in Dorchester, Suffolk, MA, USA. She died on 7 May 2004 in New York City, New York, NY, USA.



Ruth was counted in a census in 1910 in Cambridge, Middlesex, MA, USA. She was counted in a census in 1920 in Somerville, Middlesex, MA, USA. She was counted in a census in 1930 in Manhattan, New York, NY, USA.

DEATH: Requiem Mass held at the Church of the Resurrection, New York

Saturday 5 June 2004 10:00AM. Phil and Nancy Irving attended the service.

Ruth never married.

- 97 F iii. **Dorothy Mae IRVING** was born on 18 Nov 1907 in Dorchester, Suffolk, MA, USA. She was christened in 1912 in Scranton, Lackawanna, PA, USA. She died on 30 Jun 1997 in Hanson, Plymouth, MA, USA from heart failure. She was buried in Fern Hill: Hanson, Plymouth, MA, USA.



Dorothy was counted in a census in 1910 in Cambridge, Middlesex, MA, USA. She was counted in a census in 1920 in Somerville, Middlesex, MA, USA. She was counted in a census in 1930 in Brooklyn, Kings, NY, USA.

Dot is not living with her husband after 3 yrs of marriage (1930), per Census. Yet their second child is born in 1930.

BIRTH: Also shown as Born Boston, Suffolk, MA.

DEATH: Also shown as Died 26 Jun 1997

Dorothy married **Theodore Antoine WENZ**, son of Edward Gustav Adolph WENZ and Grace Eugenie VAUTRINOT, on 27 May 1927 in Whitman, Plymouth, MA, USA. Theodore was born on 26 Sep 1906 in Dedham, Norfolk, MA, USA. He died on 30 Nov 1968 in Miami, Dade, FL, USA. He was buried in Fern Hill: Hanson, Plymouth, MA, USA.



Theodore was counted in a census in 1910 in Dedham, Norfolk, MA, USA. He was counted in a census in 1930 in Hanson, Plymouth, MA, USA.

GIVEN_NAMES: Also shown as Theodore Anthony

- 98 F iv. **Anna Adelaide IRVING** was born on 16 Nov 1909 in Cambridge, Middlesex, MA, USA. She died on 5 Jun 2001 in Ocala-Sparr, Marion, FL, USA. She was buried in Indianapolis, Marion, IN, USA.



Anna was counted in a census in 1910 in Cambridge, Middlesex, MA, USA. She was counted in a census in 1920 in Somerville, Middlesex, MA, USA.

Anna Adelaide Irving or Adelaide Irving?

BIRTH: 1908 or 1909?

Anna married **Condee AUSTIN**, son of Floyd AUSTIN and Essie PITCHFORD, on 3 Sep 1931. Condee was born on 22 Dec 1909 in Scottsville, Allen, KY, USA. He died in Feb 1981 in Hollywood, Broward, FL, USA.

Condee was counted in a census in 1910 in Scottsville, Allen, KY, USA. He was counted in a census in 1920 in Scottsville, Allen, KY, USA. He resided from Feb 1981 to Feb 1981 in Hollywood, Broward, FL, USA.

- 99 F v. **Lina Pauline IRVING** was born on 30 Apr 1912 in Scranton, Lackawanna, PA, USA. She died on 29 Feb 2008 in Quincy, Norfolk, MA, USA.



Lina was counted in a census in 1920 in Foxborough, Norfolk, MA, USA. She was counted in a census in 1930 in Wellesley, Norfolk, MA, USA.

Lina married **Corey Abel HEATH**. Corey was born on 24 Jan 1909 in Somerville, Middlesex, MA, USA. He died on 23 Nov 1989 in Boston, Suffolk, MA, USA. He was buried in Hudson, Middlesex, MA, USA.

- 100 F vi. **Beatrice Helen IRVING** was born on 19 Jul 1914 in Somerville, Middlesex, MA, USA. She died on 26 Jan 1996 in Thornton, Adams, CO, USA. She was buried in Pickens, , SC, USA.



Beatrice was counted in a census in 1920 in Foxborough, Norfolk, MA, USA. She was counted in a census in 1930 in Wellesley, Norfolk, MA, USA.

Beatrice married **Alvin FOULK**, son of John Geary FOULK and Anna A., on 20 Jul 1935 in Brooklyn, Kings, NY, USA. Alvin was born on 23 Jan 1907 in , , PA, USA. He died on 6 Sep 1995 in Thornton, Adams, CO, USA. He was buried in Pickens, , SC, USA.



Alvin was counted in a census in 1920 in Brooklyn, Kings, NY, USA. He was counted in a census in 1930 in Brooklyn, Kings, NY, USA. He served in the military in WW-II.

- 101 M vii. **Linus Dudley IRVING** was born on 3 Aug 1916 in Somerville, Middlesex, MA, USA. He died on 23 Feb 1919 in Somerville, Middlesex, MA, USA from Convulsions. He was buried on 25 Feb 1919 in Glenwood Cemetery: Everett, Middlesex, MA, USA.

Identical twin of John Fremont Irving.

Not sure of date of birth. August 2 and 3 are recorded.

DEATH: Cause of death: Convulsions. Age at death 2 yrs 6 months.

Find-A-Grave website link: <http://www.findagrave.com/cgi->

102 M viii. **John Fremont IRVING** was born on 4 Aug 1916 in Somerville, Middlesex, MA, USA. He died on 28 Mar 1987 in Framingham, Middlesex, MA, USA. He was buried on 1 Apr 1987 in National Cemetery: Bourne, Barnstable, MA, USA.



John resided at ,per his Bible, in 1927 in 6 Poplar Road: Cambridge, Middlesex, MA, USA. He served in the military from 9 Feb 1942 to 1966.

US Army, World War II C Company, 254th Infantry Reg. (Europe)

Army service No. 11-047-693 Served active duty 9 Feb 1942 discharged 20 Oct 1945 Ft Devens, MA World War II in Europe. Overseas WWII: 14 Jan 1943 to 28 Sep 1945 Infantry. See <http://www.63rdinfdiv.com/miscphotospage75.html> which includes photo.

Decorations: WWIIM: GCM: EURP, AFR, MIDEAST, theatre campaign ribbons Engagements: ROME ARNO: S.FRANCE RHINELAND: CENTRAL EUROPE Upon discharge, joined the Mass Nat'l Guard as a full time employee until retirement in 1966. Highest rank held: MSG E7, Total service: 22y 2m 12d. He returned to the United States from Europe on the ship Queen Mary.

The Irving family (with Agnes N. Morrice) moved to 72 West Central St, Natick, MA in 1950. We have a church bulletin of December 3, 1950 that welcomes new members (including the Irvings and Agnes) to the First Congregational Church of Natick. The Irvings previously lived on Cypress St. in Newton Centre, MA and were members of the Prospect Congregational Church of Cambridge, MA.

HOBBIES: Ice Hockey - one of the founders and later a volunteer for Natick Comets youth hockey program, church sexton (Janitor).

OCCUPATION: Mass National Guard then employed by Natick (MA) Schools - Janitor.

Find-A-Grave website link: <http://www.findagrave.com/cgi-bin/fg.cgi?page=gr&GSln=Irving&GSiman=1&GSst=21&GRid=2875494&>

John married **Laura Alma FOSTER**, daughter of Linnell FOSTER and Annie Gertrude PREBLE, on 5 Sep 1941 in Cambridge, Middlesex, MA, USA. Laura was born on 30 Jul 1913 in Cambridge, Middlesex, MA, USA. She was christened on 14 Jun 1915. She died on 14 Dec 2006 in Marlborough, Middlesex, MA, USA. She was buried on 20 Dec 2006 in National Cemetery: Bourne, Barnstable, MA, USA.



Laura was counted in a census in 1920 in Dorchester, Suffolk, MA, USA. She was counted in a census in 1930 in Belmont, Middlesex, MA, USA.

She grew up in Cambridge, MA.

Her father left the family when Laura was young.

Attended secretarial school

Employed: at Boston Public Library

Employed: Jordan Marsh at Shoppers World, Framingham, Ma

Salesclerk/Secretary

Employed: MIT finance office secretarial work

Involved with church: First Congregational Church Natick. MA taught kindergarten, active in the Church's Women's Union.

Active in the Girl Scouts of America from childhood and a scout leader as an adult.

Traveled via train across the country (East to West through Canada and West to East through the U. S.) visiting several National Parks in 1937 with a girl friend.

Breast Cancer survivor, double radical mastectomies, first one in 1976.

She is descended from families with a long history in New England. Both her parents trace back to some of the original settlers of New England.

She often signed her name as Laura F. (for Foster) Irving using her maiden name as her middle name instead of her christening middle name of Alma.

- 103 F ix. **Josephine Edith IRVING** was born on 29 Apr 1920 in Somerville, Middlesex, MA, USA. She died on 20 Jan 1998 in Hyannis, Barnstable, MA, USA. She was buried in St Francis Xavier: Centerville, Barnstable, MA, USA.

Josephine was counted in a census in 1930 in Barnstable, Orleans, MA, USA.

Josephine married **Robert Frances LEBEL** on 30 Jun 1939 in Osterville, Barnstable, MA, USA. Robert was born on 18 May 1920 in Hull, Plymouth, MA, USA. He died on 21 Sep 1995 in Bedford, Middlesex, MA, USA. He was buried in St Francis Xavier: Centerville, Barnstable, MA, USA.

84. **Mabel Alberta IRVING** (Anna Adelaide SEELY, Linus, Linus, Seth, Obadiah, Obadiah, Obadiah, Obadiah) was born on 13 Mar 1874 in , Saint John, NB, Canada. She died on 16 Oct 1947 in Newton, Middlesex, MA, USA from Myocardial Failure & Kidney Failure. She was buried on 18 Oct 1947 in Needham, Norfolk, MA, USA.



Mabel was counted in a census in 1891 in Saint John, Saint John, NB, Canada. She was counted in a census in 1900 in Cambridge, Middlesex, MA, USA. She was counted in a census in 1910 in Somerville, Middlesex, MA, USA. She was naturalized in 1914. She was counted in a census in 1930 in Wellesley, Norfolk, MA, USA.

Mabel married **Albert Young JUSTIS "Reggie"**, son of Frank D. JUSTIS and Evaline YOUNG, about 1915 in Somerville, Middlesex, MA, USA. Reggie was born on 12 Dec 1879 in Kennedyville, Kent, MD, USA. He died on 2 Nov 1956 in Boston, Suffolk, MA, USA.



Reggie was counted in a census in 1880 in Jersey City, Hudson, NJ, USA. He was counted in a census in 1900 in Boston, Suffolk, MA, USA. He was counted in a census in 1910 in Boston, Suffolk, MA, USA. Albert Young "Reggie" JUSTIS Registered for World War I draft in Somerville, Middlesex, MA, USA - 12 Sep 1918 He was counted in a census in 1920 in Somerville, Middlesex, MA, USA. He was counted in a census in 1930 in Wellesley, Norfolk, MA, USA. He worked as Printer.

Do not know how he became to be known by the name of Reggie.

Jim (RIN-5) remembers Uncle Reggie would often join the Irving's for Thanksgiving diner. It was common that after the high school football game we would drive to his house in Wellesley (just off Rte 9) to pick him up and bring him to Natick.

Records indicate that Albert and Mabel were about four years different in age, yet 1920 and 1930 census recorded they were the same age. So one of them was not sure of when they were born.

They had the following children.

- 104 M i. **Philip Albert JUSTIS** was born on 12 Oct 1916 in , , MA, USA. He served in the military on 15 Mar 1941. He died on 20 Jul 1944 in Normandy, France. He was buried in Normandy, France.
- Philip was counted in a census in 1930 in Wellesley, Norfolk, MA, USA. He served in the military from 15 Mar 1941 to 20 Jul 1944.



Index

Name	ID	Page	Name	ID	Page
<SEELY>, Maria (b.1854)	76S	17	IRVING, John Fremont (b.1916)	102	23
ANDREWS, John Biggins	55S	16	IRVING, Josephine Edith (b.1920)	103	24
ANDREWS, John Biggins (b.1855)	81	16	IRVING, Lina Pauline (b.1912)	99	22
ANDREWS, Robert	80	16	IRVING, Linus Dudley (b.1873)	83	20
ANGELL, Mary (b.1616)	1S	1			16
AUSTIN, Condee (b.1909)	98S	22	IRVING, Linus Dudley (b.1916)	101	22
BAKER, Ellen	74S	15	IRVING, Mabel Alberta (b.1874)	84	24
BARNES, Daniel	48S	9			17
BISHOP, Abigail (b.1696)	11S	5	IRVING, Mildred Seely (b.1905)	95	21
BOSTWICK, Hanford (b.1785)	40S	11	IRVING, Ruth Evelyn (b.1906)	96	21
BOSTWICK, Harriet Maria (b.1834)	53	11	IRVING, William John (b.1808)	56S	16
BRAYDON, Elizabeth	39S	8	JONES, Hannah (d.1866)	61S	12
BRITTANY, John	31S	7	JUSTIS, Albert Young (b.1879)	84S	24
CAMPBELL, Bertram (b.1903)	94	20	JUSTIS, Philip Albert (b.1916)	104	25
CAMPBELL, Earnest C. (b.1893)	89	19	KELLY, Mary (b.1778)	37S	9
CAMPBELL, Elmer J. (b.1901)	93	20	LAMOUREAUX, Mary Elizabeth	46S	12
CAMPBELL, Frank Edward (b.1886)	88S	17	LEBEL, Robert Frances (b.1920)	103S	24
CAMPBELL, Horace Edgar (b.1895)	90	19	MOORE, Anne	36S	8
CAMPBELL, Mabel B (b.1898)	92	19	MORSE, Curtis Ernst (b.1890)	92S	19
CAMPBELL, Maude Harriet (b.1896)	91	19	OSBORN, Priscilla (b.1650)	3S	2
CAMPBELL, Walter (b.1871)	82S	18	PETIT, Ebenezer (b.1700)	15S	4
CHURCH, Arthur Elliot (b.1892)	91S	19	PITT, Hubert A.	60S	12
CRISSY, Abigail	20S	5	RAYMOND, Lemuel (b.1734)	25S	5
DUNHAM, Hannah (b.1781)	37S	9	RUSSELL, Daniel (b.1799)	44S	9
EDMUNDSON, Sarah E E (b.1841)	61S	12	RUSSELL, James	55S	16
EVANS, Abraham "Tuffy"	38S	8	SAUNDERS, Margaret A.	54S	11
FAIRCHILD, Alexander	33S	7	SCHOFIELD, Eunice (b.1707)	16S	4
FINCH, Joseph	8S	4	SCHOFIELD, Sarah (b.1737)	26S	7
FINCH, Joseph (b.1704)	18	4	SEELY, Abigail (b.1673)	8	4
FINCH, Susanna (b.1674)	6S	4			3
FOSTER, Laura Alma (b.1913)	102S	23	SEELY, Agnes Jane (b.1853)	77	15
FOULK, Alvin (b.1907)	100S	22	SEELY, Amanda Margaret (b.1842)	60	11
GARDNER, Lucy (b.1855)	69S	14	SEELY, Ann (b.1734)	19S	5
GAYNOR, James	33S	8		24	5
GREEN, Elliot	29S	6	SEELY, Ann Francis (b.1810)	48	9
HANNAM, Annie Mae (b.1887)	83S	20	SEELY, Anna Adelaide (b.1834)	56	16
HARRINGTON, Abraham Joseph	31S	7			11
HEATH, Corey Abel (b.1909)	99S	22	SEELY, Annah (b.1765)	33	7
HENDERSON, Eliza A. (b.1835)	58S	17	SEELY, Beach (b.1770)	35	8
HOLLY, Elizabeth	12S	4	SEELY, Beach Peters (b.1807)	46	12
HOLLY, Sarah (b.1701)	14S	5			9
HOYT, Samuel E.	53S	11	SEELY, Benjamin (b.1671)	7	3
HOYT, Samuel fifth	21S	5	SEELY, Charles (b.1832)	62	13
HULL, Josiah	22S	5	SEELY, Charles H (b.1812)	49	13
IRVIN, Amelia	50S	9			9
IRVING, Anna Adelaide (b.1909)	98	22	SEELY, Charles Henry (b.1852)	76	17
IRVING, Beatrice Helen (b.1914)	100	22			15
IRVING, Dorothy Mae (b.1907)	97	21	SEELY, Charlotte (b.1806)	45	9
IRVING, Jane (b.1817)	49S	14	SEELY, Cornelius (b.1650)	3	1
IRVING, Jennie Virginia (b.1868)	82	18	SEELY, Elijah (b.1707)	16	4
	16		SEELY, Elizabeth (b.1804)	44	9

Name	ID	Page
SEELY, Elizabeth (b.1832)	66	13
SEELY, Esther (b.1731)	22	5
SEELY, Ezekeil (b.1740)	27	5
SEELY, Fannie A. (b.1879)	87	17
SEELY, George Thomas (b.1839)	59	11
SEELY, Habakuk (b.1655)	5	2
SEELY, Hannah Dunham (b.1844)	72	14
SEELY, Hiram (b.1823)	52	9
SEELY, James Alfred (b.1837)	58	17
		11
SEELY, James Irving A. (b.1838)	69	14
SEELY, James Porteous (b.1832)	64	13
SEELY, Jane (b.1846)	73	14
SEELY, Jerome (b.1772)	36	8
SEELY, Jessie Ford (b.1856)	78	17
		15
SEELY, John	19	5
	24S	5
SEELY, John (b.1742)	28	6
SEELY, John B. (b.1877)	85	17
SEELY, John S. (b.1693)	11	5
		4
SEELY, John Sangster	44S	9
SEELY, Jonas (b.1652)	4	2
SEELY, Jonas (b.1679)	10	3
SEELY, Joseph (b.1802)	43	9
SEELY, Josiah (b.1732)	23	5
SEELY, Linus (b.1798)	41	11
SEELY, Linus (b.1774)	37	9
SEELY, Linus (b.1798)	41	9
SEELY, Linus (b.1840)	70	14
SEELY, Linus (b.1848)	74	14
SEELY, Linus (b.1774)	37	8
SEELY, Linus Henry (b.1832)	61	12
SEELY, Lydia (b.1736)	25	5
SEELY, Maggie M. (b.1877)	86	17
SEELY, Manley Danforth (b.1832)	65	13
SEELY, Margaret (b.1832)	67	13
SEELY, Margeret (b.1859)	79	15
SEELY, Maria G. (b.1797)	40	11
		9
SEELY, Mary (b.1832)	63	13
SEELY, Mary Jane (b.1830)	55	16
		11
SEELY, Mary Matilda (b.1850)	75	15
SEELY, Mercy (b.1701)	13	4
SEELY, Mercy (b.1744)	29	6
SEELY, Nathaniel (b.1695)	12	4
SEELY, Nathaniel (b.1675)	9	3
SEELY, Obadiah (b.1645)	2	3
SEELY, Obadiah (b.1670)	6	4
SEELY, Obadiah (b.1701)	14	5
SEELY, Obadiah (b.1614)	1	1
SEELY, Obadiah (b.1645)	2	1

Name	ID	Page
SEELY, Obadiah (b.1670)	6	3
SEELY, Obadiah (b.1728)	20	5
SEELY, Obadiah (b.1701)	14	4
SEELY, Perserved (b.1711)	17	4
SEELY, Richard	42	9
SEELY, Ruth (b.1763)	32	7
SEELY, Sarah (b.1757)	30	7
SEELY, Sarah (b.1729)	21	5
SEELY, Sarah (b.1808)	47	9
SEELY, Sarah Armitage (b.1777)	38	8
SEELY, Seth (b.1737)	26	7
SEELY, Seth Capt (b.1767)	34	8
SEELY, Seth (b.1737)	26	5
SEELY, Seth (b.1814)	51	9
SEELY, Seth Sterritt (c.1834)	57	11
SEELY, Susanna (b.1705)	15	4
SEELY, Tamar (b.1757)	31	7
SEELY, William (b.1842)	71	14
SEELY, William (b.1779)	39	8
SEELY, William Holem (b.1813)	50	9
SEELY, William Linus (b.1828)	54	11
SEELY, William W (b.1835)	68	14
SLAWSON, Mary (d.1689)	4S	2
SMITH, Ruth Strange (b.1842)	69S	14
SPENCE, Anna Katherine (b.1845)	59S	11
SPRAGUE, Elijah (b.1801)	45S	9
SQUIRES, Anna (b.1773)	34S	8
STERRITT, Jane (b.1810)	41S	11
STEVENS, Esther (b.1648)	2S	3
THANE, William	38S	8
TOOKER, Mary	23S	5
UNKNOWN, Ethel M.	93S	20
WALSH, Catherine	27S	6
WARD, John Nehemiah (b.1846)	78S	17
WARD, Ruth Lulu (b.1888)	88	17
WENZ, Frederick Joseph (b.1911)	95S	21
WENZ, Theodore Antoine (b.1906)	97S	21
WICKS/WICKES/WEEKS, M (b.1660)	4S	2